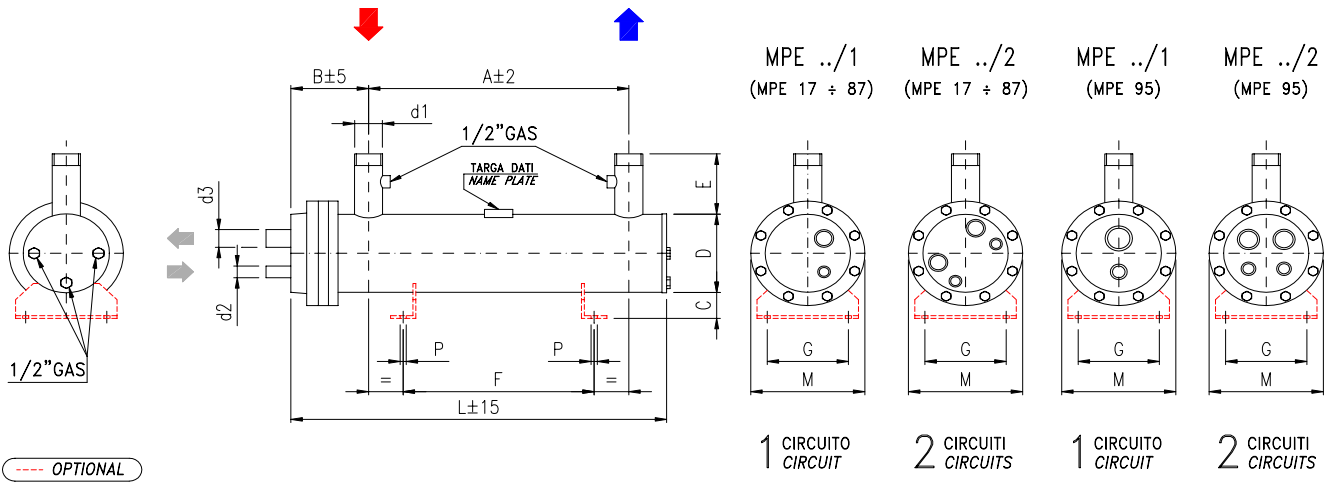


MPE



MODELLO / MODEL	MPE	17	26	35	45	55	70	87	95
Potenza totale	kW	17	26	35	45	55	70	87	95
Total capacity	Tons (RT)	4,8	7,4	10,0	12,8	15,6	19,9	24,7	27,0
Portata / Flow rate	m ³ /h	2,9	4,5	6,0	7,7	9,4	12,0	15,0	16,3
Perdite di carico / Pressure drop	kPa	13	24	31	25	20	27	22	24
Volume gas	L	3	4	5	6	8	9	11	12
Volume H ₂ O		9	10	12	13	17	19	22	23

Potenza totale = somma di tutti i circuiti / Total capacity = sum total of all circuits

DIMENSIONI DIMENSIONS (mm)	A	690	840	1040	1190	1030	1180	1380	1530	
	B	153						165		
	C	56						56		
	D	141						168		
	E	130						130		
	F	550	650	800	950	800	950	1100	1200	
	G	160						160		
	L	915	1065	1265	1415	1280	1430	1630	1780	
	M	225						225		
	P	12						12		

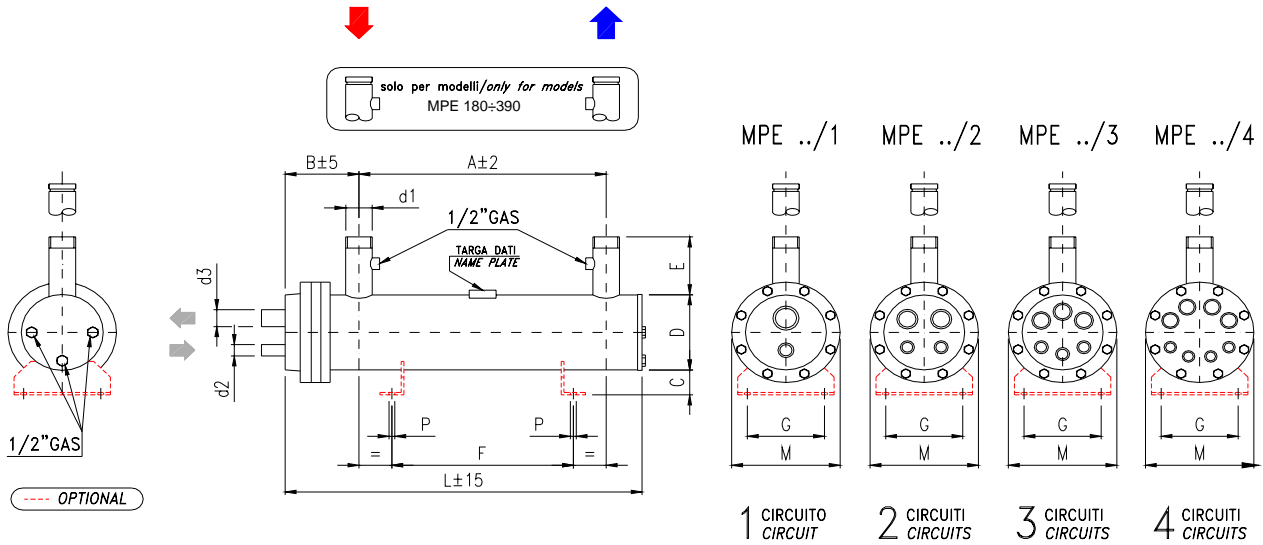
ATTACCHI / CONNECTIONS	ACQUA / WATER		d1 - PN 10	Ø 1-1/2"			Ø 2-1/2"		
	1 Circuito 1 Circuit	MPE../1	d2	ODS (RT) 22			ODS (RT) 22		ODS (RT) 22
			d3	ODS (RT) 35			ODS (RT) 35		ODS (FL) 54
	2 Circuiti 2 Circuits	MPE../2	d2	ODS (RT) 22			ODS (RT) 22		
d3			ODS (RT) 35			ODS (RT) 35			

PESO / WEIGHT	kg	35	40	43	48	54	60	66	71
---------------	----	----	----	----	----	----	----	----	----

DATI NOMINALI NOMINAL DATA	R 407C	Temperatura entrata acqua / Inlet water temperature	+12°C	Temperatura di evaporazione / Evaporation temperature	+2.5 °C
		Temperatura uscita acqua / Outlet water temperature	+7°C	Temperatura di condensazione / Condensation temperature	+45 °C
		Fattore di sporcamento / Fouling factor	m ² /KW	0,000043	Surriscaldamento / Superheating



MPE



MODELLO / MODEL	MPE	121	137	160	180	230	300	335	390
Potenza totale	kW	121	137	160	180	230	300	335	390
Total capacity	Tons (RT)	34,4	39,0	45,5	51,2	79,6	85,3	95,3	110,9
Portata / Flow rate	m ³ /h	20,8	23,5	27,5	30,9	39,5	51,5	57,5	67,0
Perdite di carico / Pressure drop	kPa	23	25	41	20	35	30	39	72
Volume gas	L	13	16	19	20	27	31	34	44
Volume H ₂ O		33	39	42	57	62	111	109	102

Potenza totale = somma di tutti i circuiti / Total capacity = sum total of all circuits

DIMENSIONI DIMENSIONS (mm)	A	1530	1830	2030	2000	2300	2280
	B	177		192		225	
	C	66		66		85	
	D	194		219		273	
	E	130		150		150	
	F	1200	1500	1700	1600	1800	1800
	G	220		220		280	
	L	1805	2105	2305	2305	2605	2720
	M	270		270		340	
	P	12		12		14	

ATTACCHI / CONNECTIONS	ACQUA / WATER		d1 - PN 10	Ø 3"	DN 100	DN 125
	1 Circuito 1 Circuit	MPE../1	d2	ODS (FL) 35	ODS (FL) 42	ODS (FL) 42
			d3	ODS (FL) 54	ODS (FL) 64	OD (FL) 89
	2 Circuiti 2 Circuits	MPE../2	d2	ODS (FL) 28	ODS (FL) 35	ODS (FL) 42
			d3	ODS (FL) 42	ODS (FL) 54	OD (FL) 76
	3 Circuiti 3 Circuits	MPE../3	d2	ODS 28	ODS 28	ODS (RT) 35
			d3	ODS 42	ODS 42	ODS (FL) 42
	4 Circuiti 4 Circuits	MPE../4	d2	ODS 22	ODS 22	ODS 28
d3			ODS 35	ODS 35	ODS 42	

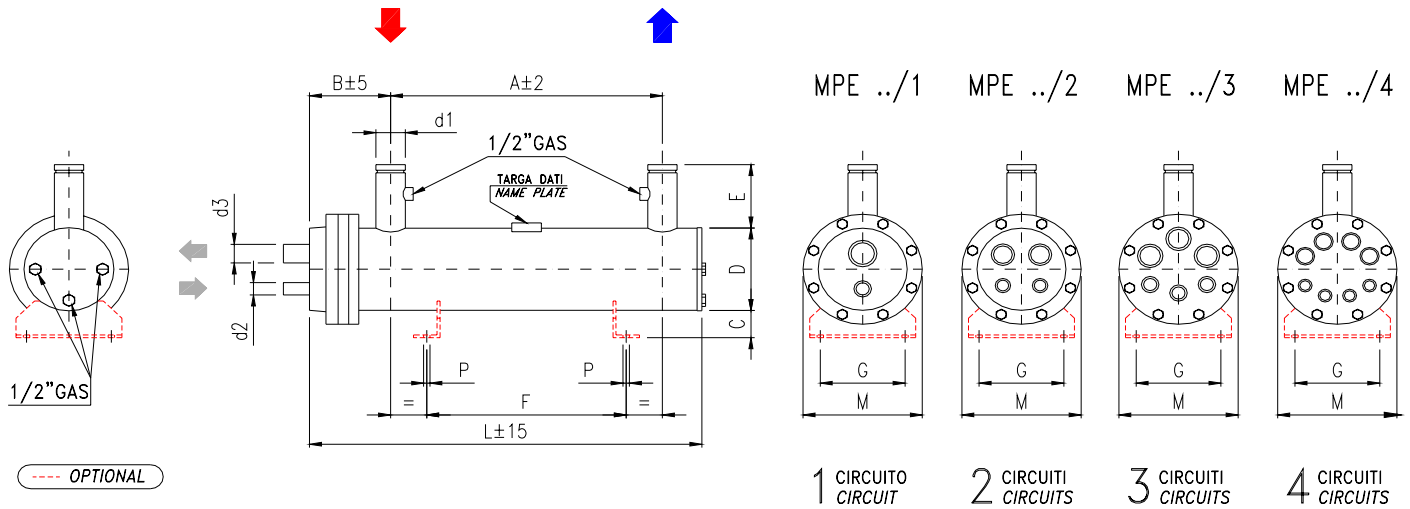
PESO / WEIGHT	kg	90	100	108	120	140	195	200	215
---------------	----	----	-----	-----	-----	-----	-----	-----	-----

DATI NOMINALI NOMINAL DATA	R 407C	Temperatura entrata acqua / Inlet water temperature	+12°C	Temperatura di evaporazione / Evaporation temperature	+2.5 °C
		Temperatura uscita acqua / Outlet water temperature	+7°C	Temperatura di condensazione / Condensation temperature	+45 °C
		Fattore di sporamento / Fouling factor	m ² /kW	0,000043	Surriscaldamento / Superheating



Shell and tube evaporators

MPE



MODELLO / MODEL	MPE	460	510	570	650	750	820	880	975
Potenza totale	kW	460	510	570	650	750	820	880	975
Total capacity	Tons (RT)	130,8	145,0	162,1	184,8	213,2	233,2	250,2	277,2
Portata / Flow rate	m^3/h	79,0	87,5	97,8	111,6	128,7	140,8	151,0	167,4
Perdite di carico / Pressure drop	kPa	51	46	62	52	62	48	68	91
Volume gas	L	53	57	67	85	91	97	103	128
Volume H ₂ O		151	147	137	240	234	221	241	274

Potenza totale = somma di tutti i circuiti / Total capacity = sum total of all circuits

DIMENSIONI DIMENSIONS (mm)	A	2250		2200	2500	2900
	B	267		313	313	
	C	94		94	94	
	D	324		406	406	
	E	200		200	200	
	F	1800		1800	2000	2400
	G	300		400	400	
	L	2760		2770	3005	3405
	M	420		520	520	
P	16		16	16		

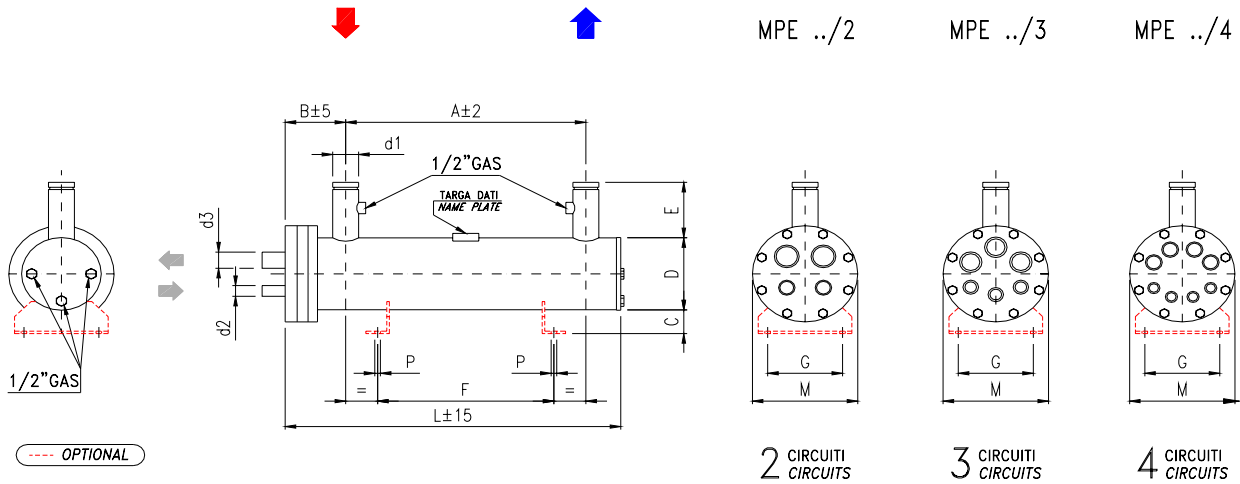
ATTACCHI / CONNECTIONS	ACQUA / WATER		d1 PN 10	DN 150	DN 200			
	1 Circuito 1 Circuit	MPE../1	d2 ODS	ODS (FL) 54	ODS (FL) 54	-		
			d3 OD	OD (FL) 114	OD (FL) 114	-		
	2 Circuiti 2 Circuits	MPE../2	d2 ODS	ODS (FL) 42	ODS (FL) 54	ODS (FL) 54		
			d3 OD	OD (FL) 89	OD (FL) 89	OD (FL) 89		
	3 Circuiti 3 Circuits	MPE../3	d2 ODS	ODS (RT) 35	ODS (FL) 42	ODS (FL) 42		
			d3	ODS (FL) 64	OD (FL) 89	OD (FL) 89		
	4 Circuiti 4 Circuits	MPE../4	d2 ODS	ODS 35	ODS (FL) 42	ODS (FL) 42		
d3			ODS 54	OD (FL) 76	OD (FL) 76			

PESO / WEIGHT	kg	325	335	350	495	510	530	560	620
---------------	----	-----	-----	-----	-----	-----	-----	-----	-----

DATI NOMINALI NOMINAL DATA	R 407C	Temperatura entrata acqua / Inlet water temperature	+12°C	Temperatura di evaporazione / Evaporation temperature	+2.5°C
		Temperatura uscita acqua / Outlet water temperature	+7°C	Temperatura di condensazione / Condensation temperature	+45°C
		Fattore di sporcamento / Fouling factor	m^2/KW	0,000043	Surriscaldamento / Superheating



MPE



MODELLO / MODEL	MPE	1035	1110	1260	1350				
Potenza totale	kW	1034	1110	1258	1348				
Total capacity	Tons (RT)	294,0	315,6	357,7	383,3				
Portata / Flow rate	m ³ /h	177,5	190,5	215,9	231,4				
Perdite di carico / Pressure drop	kPa	35	46	61	59				
Volume gas	L	137	160	175	199				
Volume H ₂ O		374	354	460	435				

Potenza totale = somma di tutti i circuiti / Total capacity = sum total of all circuits

DIMENSIONI DIMENSIONS (mm)	A	2900	2900						
	B	322	340						
	C	94	94						
	D	457	508						
	E	200	200						
	F	2400	2400						
	G	400	400						
	L	3420	3445						
	M	570	620						
P	16	18							

ATTACCHI / CONNECTIONS	ACQUA / WATER		d1 PN 10	DN 200	DN 200					
	2 Circuiti 2 Circuits	MPE../2	d2	ODS (FL) 54	OD (FL) 76					
			d3	OD (FL) 114	OD (FL) 141					
	3 Circuiti 3 Circuits	MPE../3	d2	ODS (FL) 42	ODS (FL) 54					
			d3	OD (FL) 89	OD (FL) 114					
	4 Circuiti 4 Circuits	MPE../4	d2	ODS (FL) 42	ODS (FL) 42					
d3			OD (FL) 76	OD (FL) 89						

PESO / WEIGHT	kg	840	880	1035	1090				
---------------	----	-----	-----	------	------	--	--	--	--

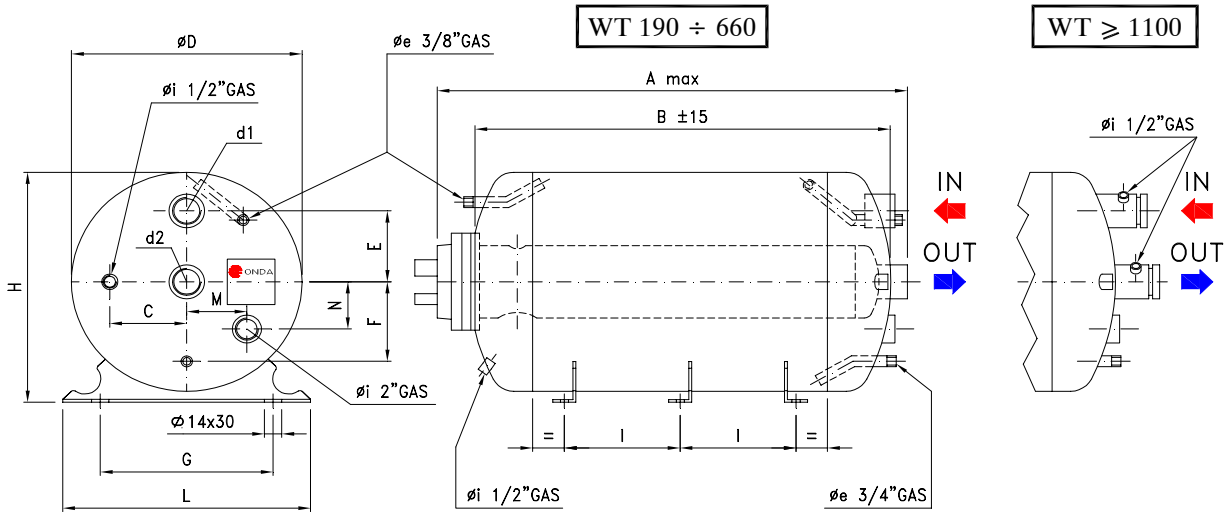
DATI NOMINALI NOMINAL DATA	R 407C	Temperatura entrata acqua / Inlet water temperature	+12°C	Temperatura di evaporazione / Evaporation temperature	+2.5 °C
		Temperatura uscita acqua / Outlet water temperature	+7°C	Temperatura di condensazione / Condensation temperature	+45 °C
		Fattore di sporcamento / Fouling factor	m ² /kW	0,000043	Surriscaldamento / Superheating



Accumulatori d'acqua per evaporatori

Water accumulators for evaporators

WT



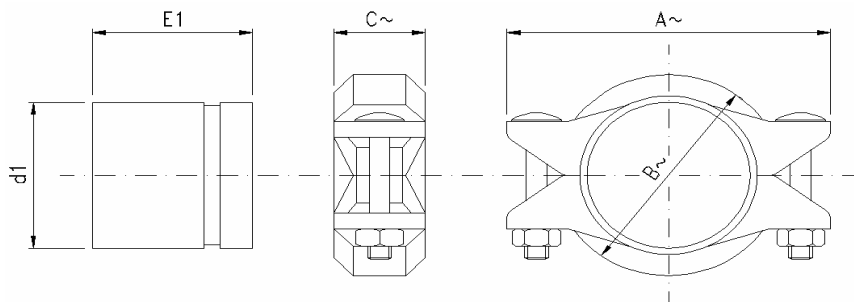
Modello / Model	WT 190	WT 200	WT 290	WT 470	WT 660	WT 1100	WT 1250	WT 1500	WT 2000
N° Staffe / Supports no.	2	2	2	2	3	3	4	4	4
Volume H ₂ O [dm ³] / Volume H ₂ O	204	260	298	465	658	1184	1354	1455	1910
A _{max}	1880	1355	1885	1925	2630	2790	3135	3340	3200
B	1760	1225	1770	1780	2485	2520	2870	3070	2855
C	100	125	125	155	155	200	200	200	220
ØD	400	480	480	600	600	800	800	800	950
E	130	160	160	200	200	270	270	270	290
F	160	190	190	240	240	330	330	330	380
G	300	380	380	480	480	650	650	650	780
H	420	500	500	620	620	820	820	820	970
I	1430	850	1390	1360	1005	1005	780	850	760
L	430	520	520	630	630	830	830	830	980
M	95	110	110	135	135	180	180	180	250
N	85	110	110	155	155	200	200	200	230
d ₁	φ ₁ 2"	φ ₁ 1-1/2"	φ ₁ 2"	φ ₁ 3"	φ ₁ 3"	DN 125	DN 125	DN 125	DN 150
d ₂	φ ₁ 2"	φ ₁ 1-1/2"	φ ₁ 2"	φ ₁ 3"	φ ₁ 3"	DN 125	DN 125	DN 125	DN 150
Peso / Weight (kg)	68	62	84	106	140	250	270	295	335
Modelli MPE inseribili Insertable MPE Models	17	17	17	17	17	180	180	180	300
	26	26	26	26	26	230	230	230	335
	35	35	35	35	35	300	300	300	390
	45	55	45	45	45	460	335	335	460
	55		55	55	55	650	390	390	510
	70		70	70	70		460	460	570
	87		87	87	87		510	510	650
	95		95	95	95		570	570	750
			121	121	121		650	650	820
							750	750	880
						820	820	1035	
						180	880	880	1260
						230			

Accumulatori d'acqua / Water Accumulators

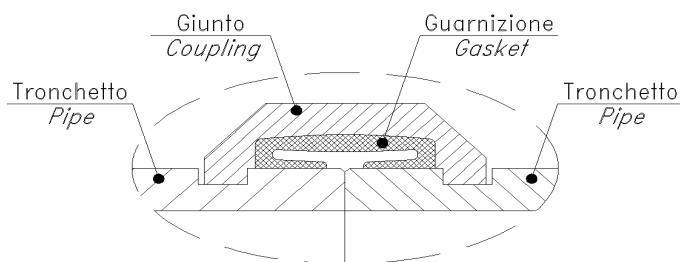
	Temperatura di progetto Design Temperature Min / Max [°C]	Pressione di progetto Design Pressure [bar]
Standard ONDA	-10 / +90	6
GOST	-10 / +90	6
CE	-10 / +90	6

GIUNTI FLESSIBILI / FLEXIBLE COUPLINGS

Solo per temperatura superiore a -18°C / Only for temperature higher than -18°C



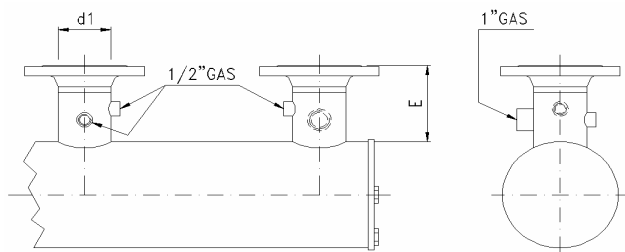
d1	A~ (mm)	B~ (mm)	C~ (mm)	E1~ (mm)
DN 80	165	115	50	80
DN 100	200	145	50	100
DN 125	245	175	50	100
DN 150	275	205	55	150
DN 200	345	265	60	150



ISOLAMENTO / INSULATION

SPESSORE / THICKNESS	
8mm	16mm
5/16"	5/8"

DISPONIBILE SU RICHIESTA / ON REQUEST AVAILABLE



d1	E (mm)
DN 80 / PN 16	140
DN 100 / PN 16	152
DN 125 / PN 16	155
DN 150 / PN 16	195
DN 200 / PN 10	197